

PRODUCT: AO Enforcer ACL Knee Brace

SKU: 94X-R, 95X-L

- Designed to offer excellent support for ACL, MCL and other knee ligament instabilities.
- Light weight, high strength Aluminum Alloy frames.
- Low profile ICR hinge closely mimics natural knee motion.
- Non-elastic straps, and condylar pads for medial-lateral stability and improved fit.
- Adjustable straps and a range of pads allow for fit customization.
- Molded silicone pads offer non-slip suspension and avoid tibial pressure.
- Quick disconnect buckle system allows for easy donning and doffing.
- Variety of extension stops to limit range of motion
- Aluminum frames allow for customization by medical professionals.

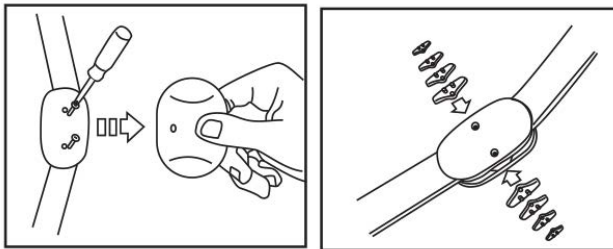


SKU	SKU	Size	Thigh Circumference	Knee Joint Width
941-R	951-L	Small	14" - 16"	3" - 3½"
J43-R	J53-L	Small	15½" - 18½"	3½" - 4"
J45-R	J55-L	Medium	18½" - 21"	4" - 4½"
J115R	J115L	Large	21" - 23½"	4½" - 5"
J116R	J116L	X Large	23½" - 26½"	5"
J117R	J117L	2X Large	26½" - 29"	5½" - 6"

HOW TO APPLY: Open all straps and step through the brace. With leg slightly bent, center hinge one (1) inch above the top of the knee cap. Push hinge slightly back behind the mid-line of the knee. Attach the first strap label on the number system shown on the straps. Pull the strap on top of the knee area, making sure it is snug. Attach all the straps on the buckle, making sure it is snug. Stand up and walk, making sure it is not too tight or too loose.

HOW TO SET THE HINGE:

- 1.
- 2.
- 3.



CARE INSTRUCTIONS: Hand wash in cold water with mild soap. Air dry away from heat.

CAUTION: Always consult a physician when encountering persistent pain, discomfort, inflammation, or swelling.

SUGGESTED HCPCS CODE: L1845/L1852

